

Carlton Park Avenue Raynes Park, SW20 8BL

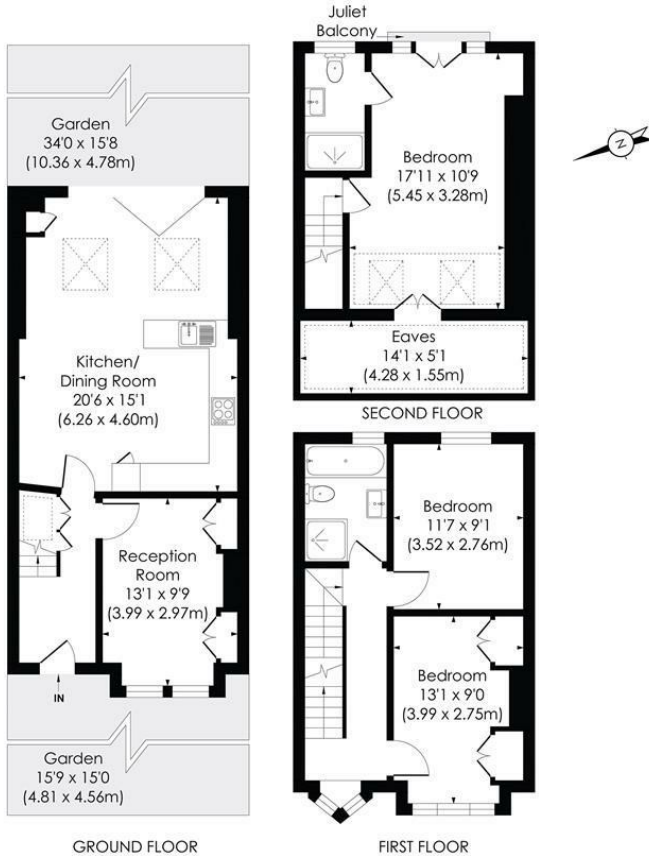
£1,000,000 Freehold



This attractive **THREE DOUBLE BEDROOM, TWO BATHROOM** Edwardian Apostle (circa 1906) has a wonderful open plan kitchen/dining/family room with bifolding doors and a spacious and well-designed master bedroom with en suite shower room. There is also a characterful entrance hall that has a gorgeous stain glass front door, decorative floor tiles, original ornate cornice and under stairs storage, a welcoming separate front reception room with plantation shutters and stunning feature fire place, a lovely 34 ft garden, beautiful family bathroom and two additional bedrooms on the first floor. Perfectly located only 0.4 Miles to Raynes Park High Street and Station.

CARLTON PARK AVENUE, SW20

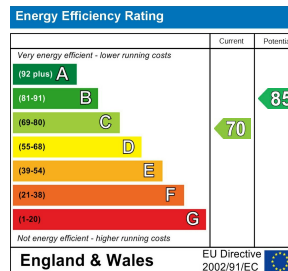
Approx. Gross Internal Floor Area
 1193 Sq. ft/110.79 Sq. m incl. reduced height
 1073 Sq. ft/99.70 Sq. m excl. reduced height



This floor plan has been prepared for the purpose of illustration only in accordance with the latest RICS code of measuring practice and is not to scale. All measurements and areas are approximate and whilst every effort has been made to ensure the accuracy of the plan contained here, no responsibility is taken for any error, omission or misstatement.

© Pixangle Property Marketing Ltd. info@pixangle.com Tel: 0208 870 2118

- Three Double Bedroom Apostle House
- Spacious Master Bedroom
- Modern Fitted Kitchen
- Popular Tree-lined Street
- Close To Station
- Neutral Decor With Charming Period Features
- Well-Proportioned With A Good Flow
- Excellent Schools Nearby
- EPC - C
- Council Tax Band - E



For Free Mortgage Quote and Best Mortgage Rates, call Ellisons Mortgage Advisor on 0208 944 9595



Although these particulars are believed to be correct, their accuracy is not guaranteed and they do not form part of any contract.

Celebrating 30 years of successful Sales and Lettings in Merton

